

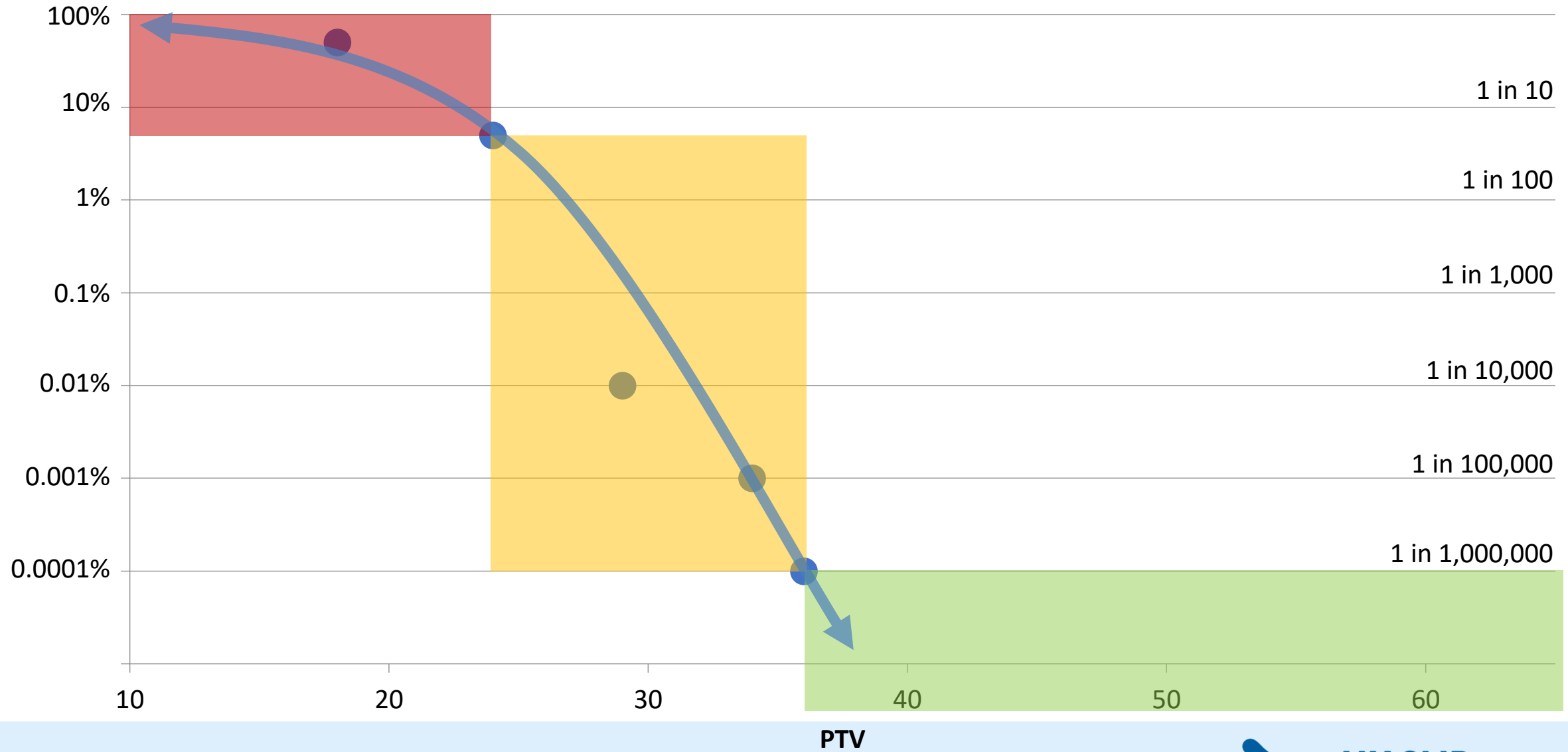
PTV values for R9 – R12 surfaces

June 2018



Slip Risk	PTV range
Low	≥ 36
Moderate	25-35
High	≤ 24

Risk of Slip

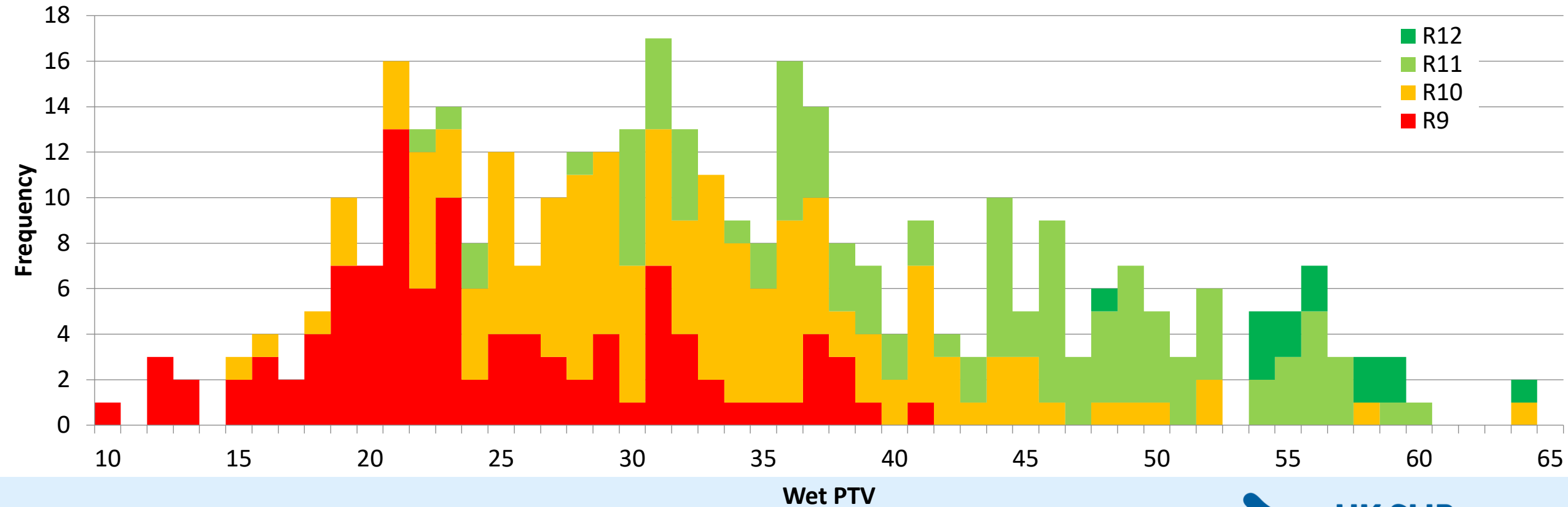




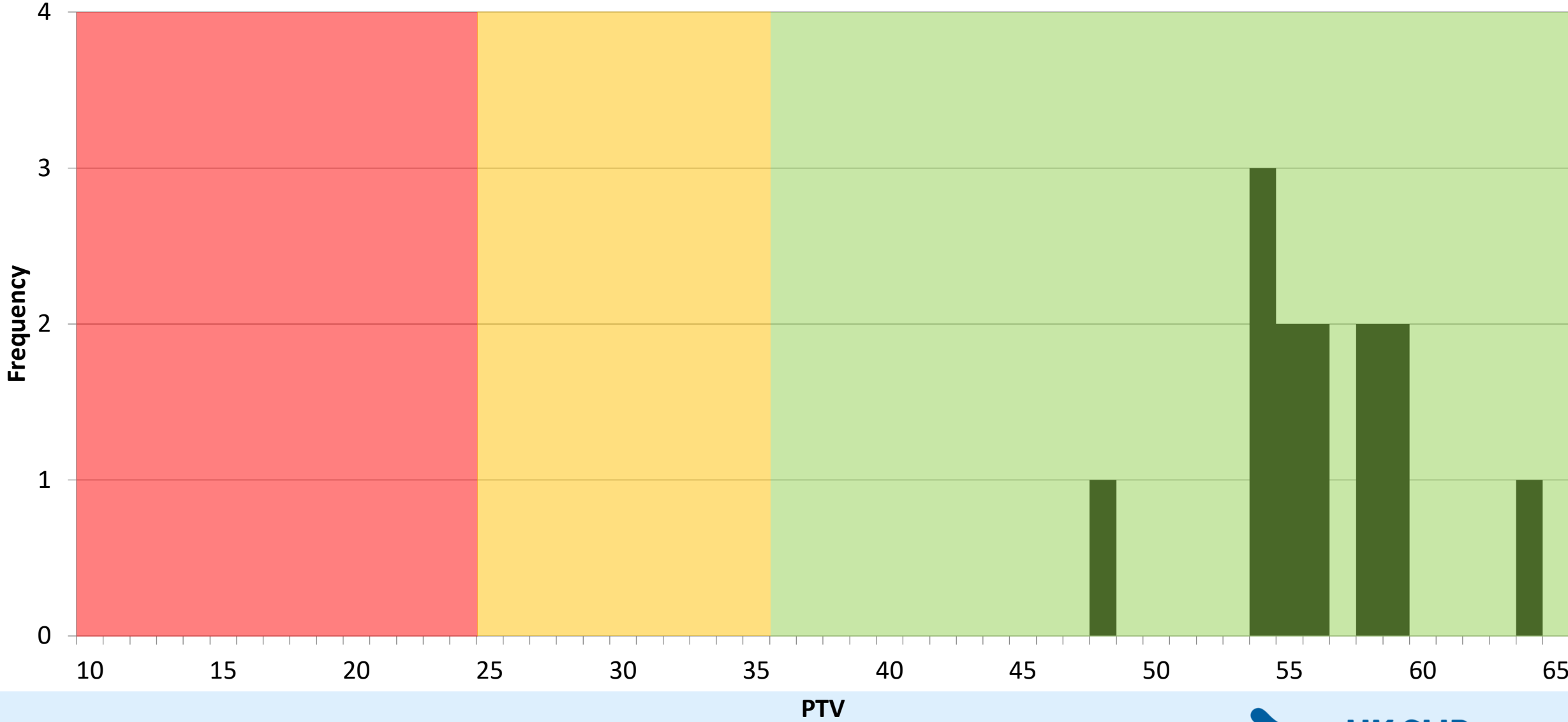
Classification	Angle of Slip	Slip Risk
R9	6° - 10°	High
R10	10° - 19°	High/Moderate
R11	19° - 27°	Moderate/Low
R12	27° - 35°	Low
R13	> 35°	Low

Collected Data

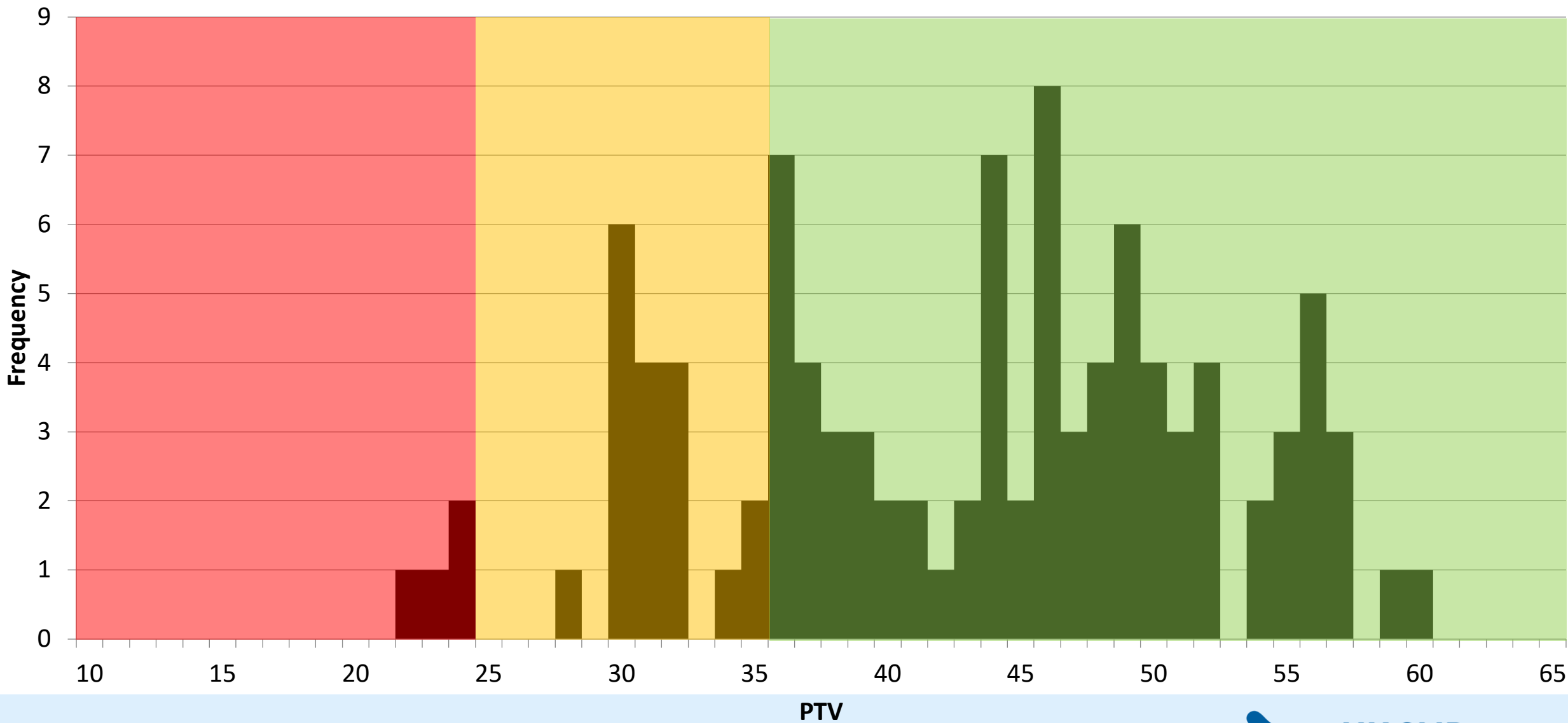
- Wet and Dry PTV values were collected
- 360 samples with Wet PTV values ranging from 10 to 64



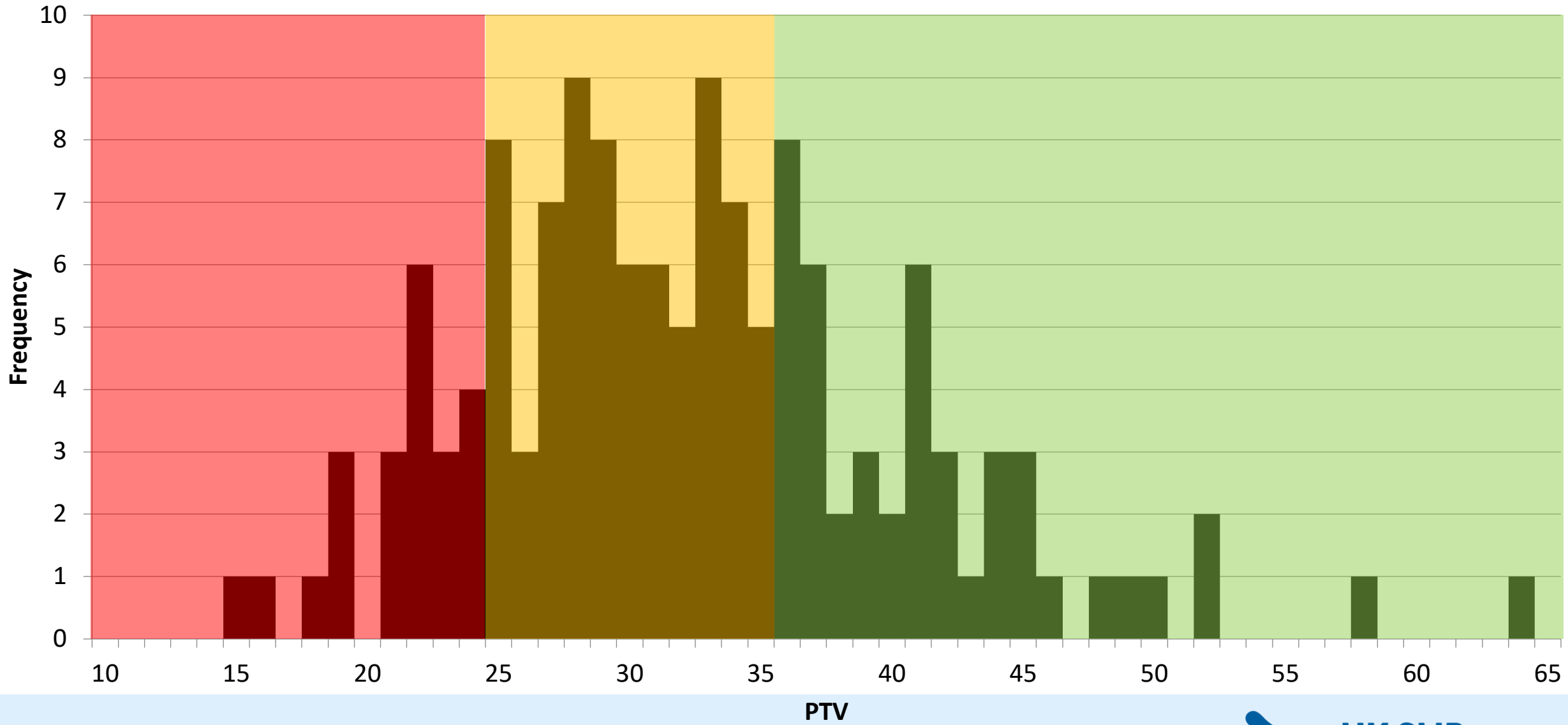
R12



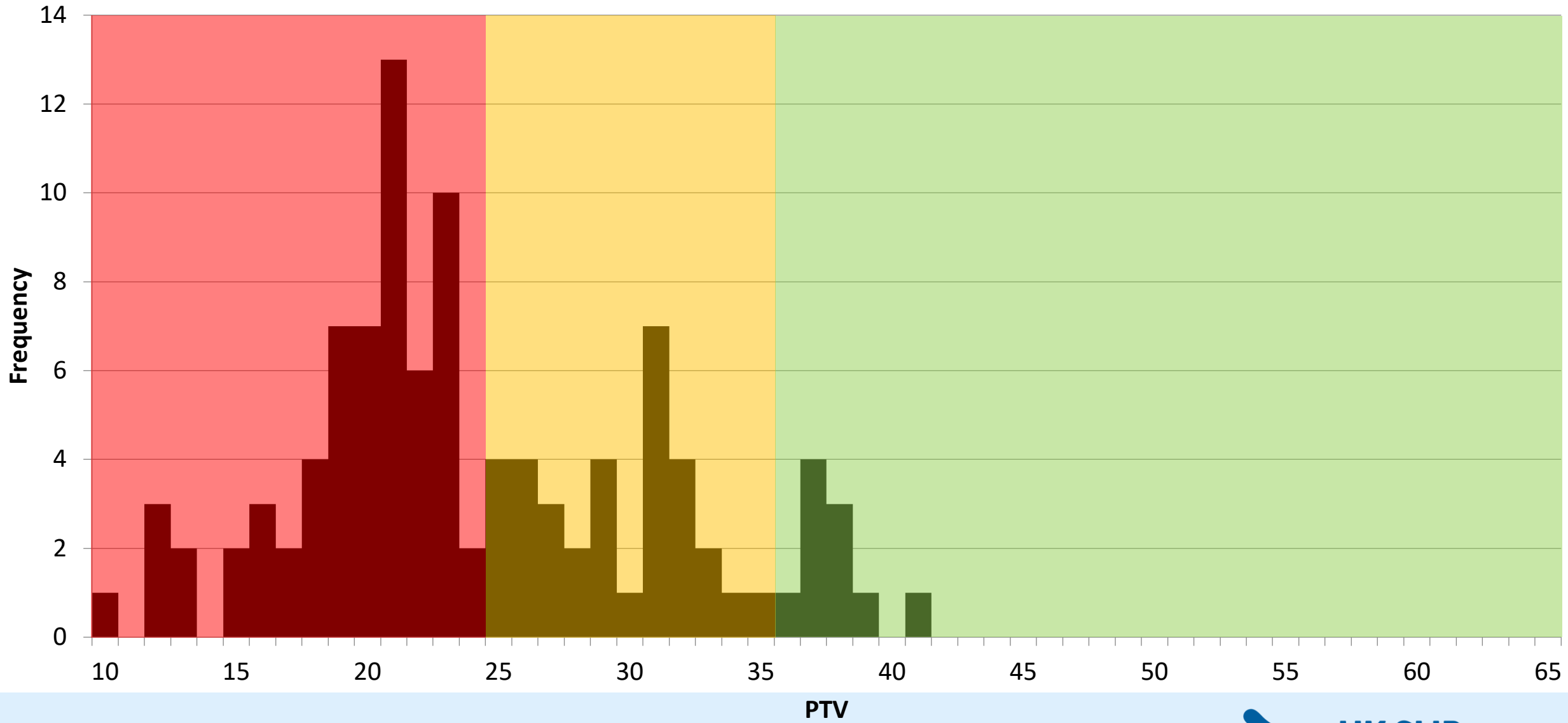
R11



R10



R9



In Conclusion

- The Pendulum and DIN 51130 are not measuring the same thing
- Floors with an R12 or R13 rating should provide low risk in wet conditions, although the sample tested was quite small
- R11 floors tend to be good in the wet, but a few floors that appear to have high risk in wet conditions could still achieve this rating
- R10 floors are typically laid in areas unlikely to get wet, however, 32% of those tested may be suitable for wet conditions
- R9 floors should remain dry in use, although a small proportion of samples appear to provide better slip resistance than expected
- As a manufacturer
 - Do not rely on the DIN 51130 “R rating” alone
 - An additional pendulum test may
 - represent the slip potential of the floor more favourably
 - highlight where seemingly good floors may have problems in wet conditions